



# Back To School Primer

S . Y . 2 0 2 2 - 2 0 2 3



## Campus Map

## Onsite Class Etiquette

## Campus Rules and Regulations

## Admin Directory



## Restaurant Recommendations

## Parking Options

## Student Council Officers



# Campus Map

B1 Auditorium  
venue of most talks

Library  
**Monday to Friday**  
9:00 A.M. - 9:00 P.M.

**Saturday**  
9:00 A.M. - 6:00 P.M.  
Blessings  
photocopying station,  
computer rooms,  
other library  
resources

Mezzanine  
located inside the  
library where other  
collections are,  
exclusive for use of  
barristers during the  
1st semester

Chapel  
**Daily Mass**  
12:00 N.N. & 6:00 P.M.  
**Anticipated Mass**  
5:15 P.M.  
Always open for all

LSAC  
**Open 24 Hrs.**  
even on weekends and  
holidays  
Place to go to when the  
library is full or when  
you want to have group  
discussions

Cafeteria  
**Monday to  
Saturday**  
11:00 A.M. - 7:00 P.M.  
place to grab food in  
between classes

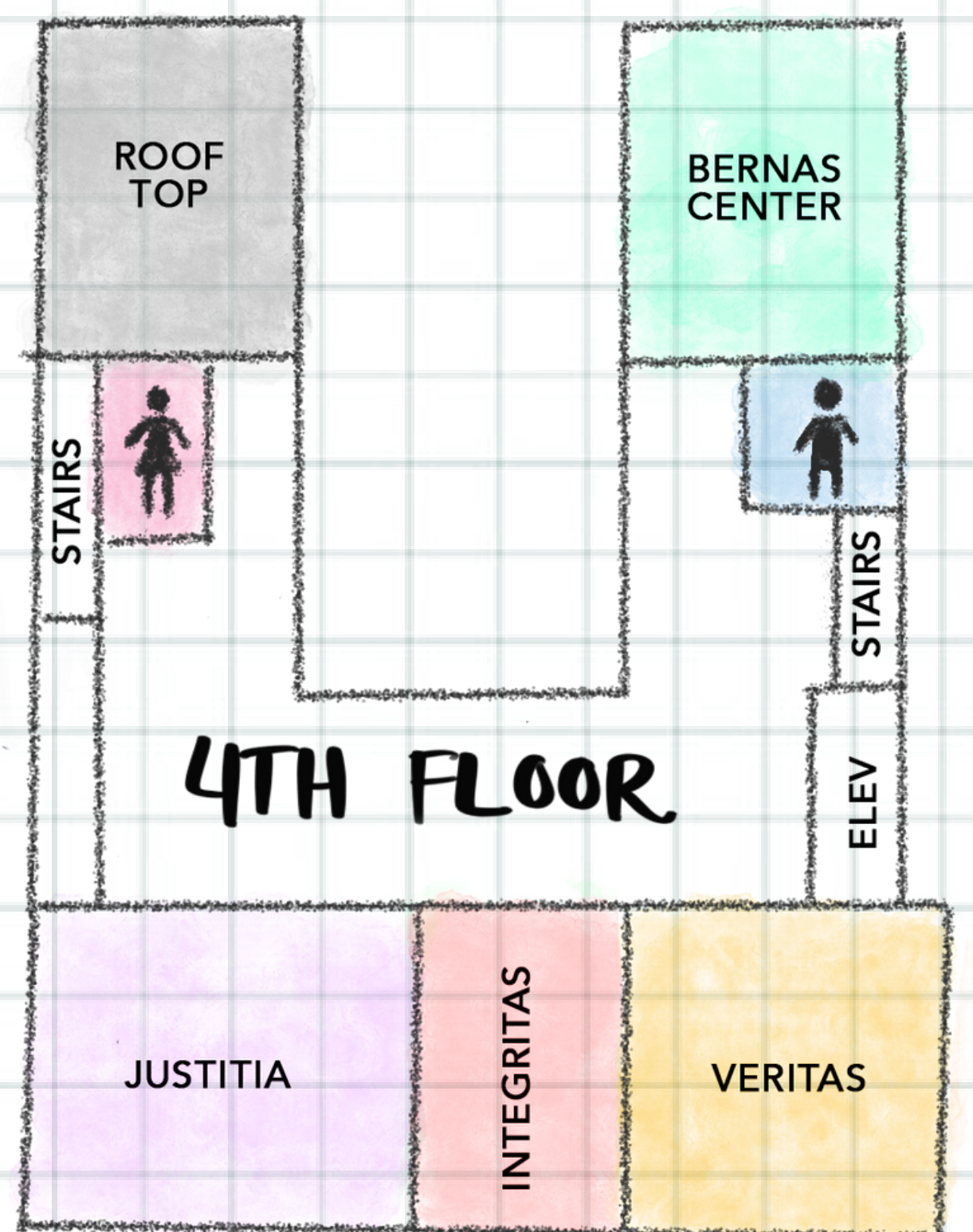
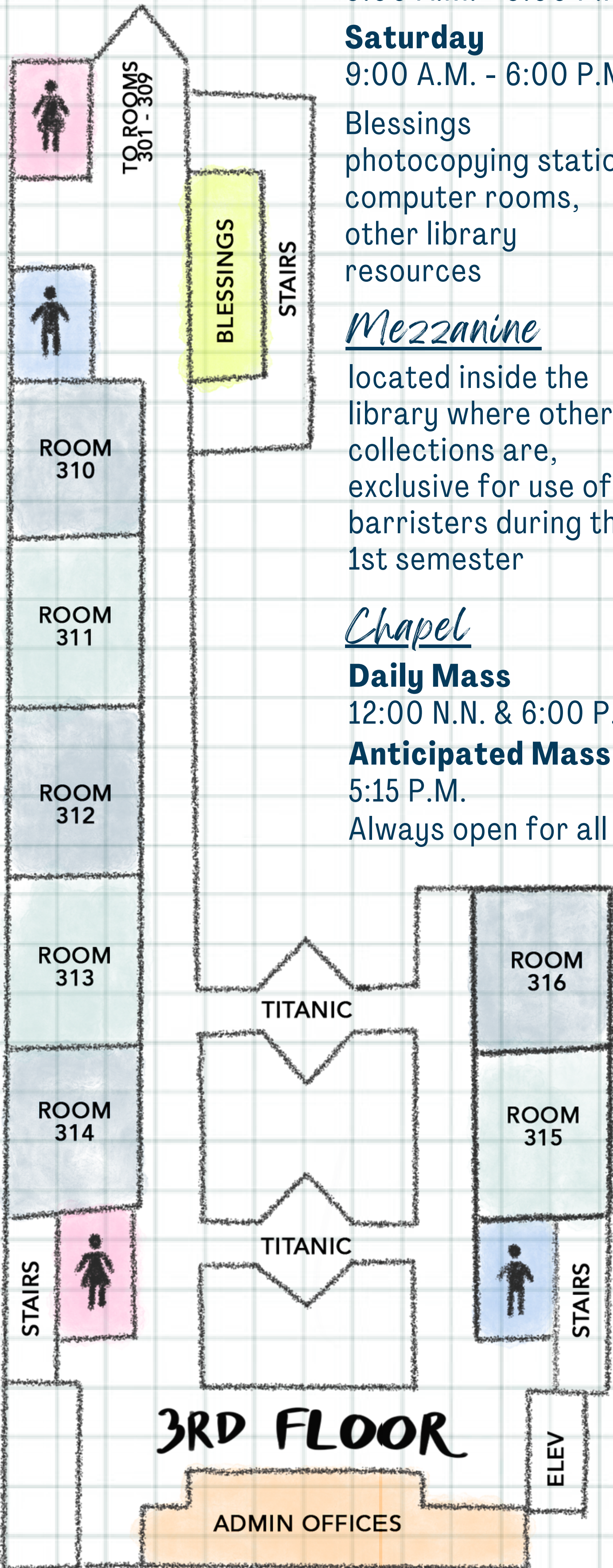
Rex Book Store  
**Monday to Saturday**  
11:00 A.M. - 6:00 P.M.  
place to get your  
books and codals from  
Mang Nats

Accounting Office  
**Monday to Friday**  
1:00 P.M. - 7:00 P.M.  
**Saturday**  
10:00 A.M. - 2:00 P.M.

Administration  
Office  
**Monday to Friday**  
1:00 P.M. - 7:00 P.M.  
**Saturday**  
1:00 P.M. - 5:00 P.M.

Bernas Center  
has 2 conference rooms  
in the 2nd floor; you can  
also study here

Veritas & Justitia  
large capacity rooms  
which can accommodate  
2 to 3 blocks; good for  
events and talks



\*operating hours may be subject to change



# Onsite Class Etiquette

#1 Ask your professor for house rules during the first day of class.

#2 Phones/devices on silent.

#3 Stand up when the professor enters the room.

#4 Raise your hand when asking a question.

#5 Refrain from being late for class to avoid disruption.

#6 Listen well in class. Don't ask the professor to repeat questions.

#7 Don't coach your classmates during recitation.

#8 No small talk during classes.

#9 Always look presentable.

#10 Always be respectful.



# Campus Rules and Regulations

SY 2022 - 2023



## Dress Code

Smart casual. No spaghetti straps and slippers.

- (SUSPENDED) The Law School imposes a dress code for all students. Male students must come in shirt and tie, or barong Filipino. Female students must come in proper business attire.
- The Law School reserves the right to refuse admission within the school premises of students who are not in proper attire, or to mark them absent from class.

## Student ID

Every student is required to wear the official Law School identification card (I.D.) before entering the APS Building and to display the I.D. at all times within the building premises.

## ! Campus Entry !

### **Purpose and Capacity.**

- Campus entry and the use of campus facilities will be limited to those scheduled for official ACADEMIC activities such as face-to-face or hybrid classes, fulfillment of academic requirements (e.g., Clinical Legal Education Program), and review. Campus entry and the use of campus facilities for organized
- NON-ACADEMIC activities require prior approval from the Office of the Associate Dean for Student Affairs or the Office of the Dean. Entry will further be limited based on the number of people expected on campus.
- The Ateneo Professional Schools (APS) will, however, maintain provisions to enable students to remotely access certain student services (i.e., library and the clinic).




## ! Campus Entry !

**Entry Points.** The (1) Hidalgo Drive Entrance; (2) Rockwell Drive Entrance; or (3) Basement Parking are all open points of entry from 7:00 AM to 10:00 PM.

**Personal Protective Equipment.** A "NO MASK, NO ENTRY" policy will be strictly enforced.

**Vaccination Status.** Only fully vaccinated persons are allowed on campus. Persons not fully vaccinated must present a negative RT-PCR test result taken within 14 days before entry.

**Blue Pass.** Before any Campus Visit, you must:

- Conduct a self-assessment.
    - If you have a fever or are experiencing other COVID-related symptoms, DO NOT go to campus. Instead, notify your Class Beadle, the Student Safety Officer, or Health Coordinator about your condition.
    - You may also wish to set an appointment for a TeleMed consultation via the BluePass platform;
  - Generate your Blue Pass QR Code by clicking on the Digital ID+QRCode icon on the Blue Pass site.
    - NOTE: The QR Code can only be generated ON THE DAY of your visit and changes daily. Thus, it is only valid on the same day it is generated,
  - Scan your Blue Pass QR Code upon your arrival on campus. You may use a screenshot, printout, or your phone at your preferred entrance.
- 



## ! Campus Entry !

**Clearance.** All persons who, under these protocols, have reported, or have been reported as, experiencing COVID-related symptoms, or were verified close contacts must seek clearance from the Office of Health Services (OHS) before returning to campus.

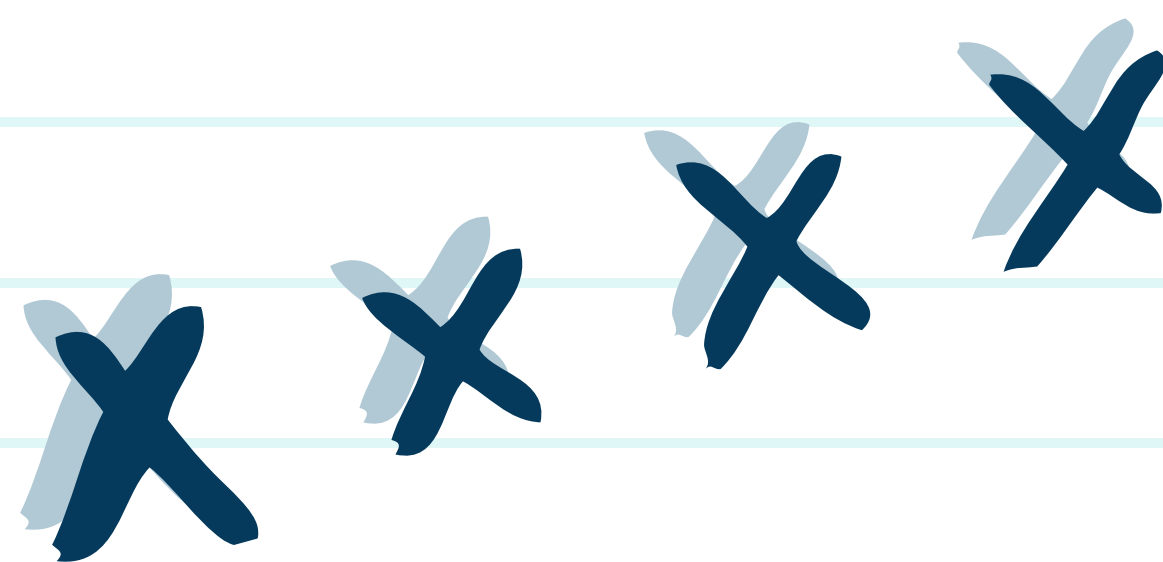
## Physical Distancing Protocols

### **General Measures**

- APS shall strictly implement physical distancing protocols for everyone while inside the school premises.
  - The minimum physical distance for students undergoing limited face-to-face classes shall be 1 meter.

### **Onsite Academic Activities**

- Students who have a scheduled onsite academic activity shall be permitted to enter the assigned venue no more than thirty (30) minutes before the start of their class/academic activity. The students shall exit the assigned venue when their class/academic activity ends.
- Students shall not roam or loiter about campus and shall restrict their movements to the assigned venues for their academic activities.







# Physical Distancing Protocols

- The maximum permissible room occupancy capacity should always be observed. Adequate ventilation shall always be maintained (e.g., doors and at least two window panels must be opened or air purifiers in place must be turned on).
- No onsite and group-based non-academic or extracurricular such as sports events, musical events, and competitions, among others, may be conducted on campus without prior approval.

## **Eating on Campus**

- Canteen services on campus will be available beginning 8 August 2022 (Monday).
- While eating on campus is discouraged, you may do so in the cafeteria. Proper physical distancing should be maintained during meals.
- Clean as you go. Please disinfect the tables and chairs used after eating and dispose of your trash in the designated receptacles.

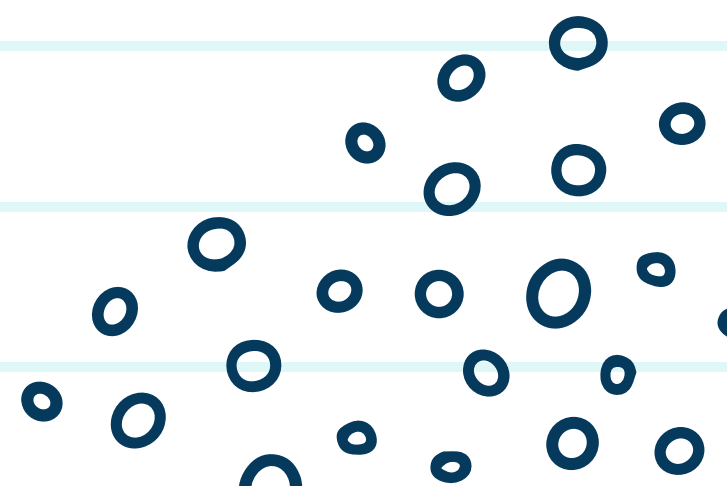
you've  
Got  
This!



# Covid-Related Symptoms on Campus

## **In General**

- Students, faculty, staff, and administrators who have tested positive for COVID-19, have COVID-19-related symptoms, or have had significant exposure to a confirmed COVID-19 case, shall stay home.
  - They should seek a teleconsultation appointment and send an e-mail to the OHS thru [healthservices.aps@ateneo.edu](mailto:healthservices.aps@ateneo.edu).
- All persons who experience COVID-related symptoms while on campus must keep their masks on and:
  - a. report the matter by
    - i. completing the Blue Pass Health Declaration Form;
    - ii. notifying persons they were in contact with;
    - iii. reporting to the Student Safety Officer or requesting other students, employees, or faculty members to report their condition on their behalf.
  - b. immediately proceed to the isolation tent and wait for the OHS.
- The OHS will assess if the isolated person is a SUSPECTED, PROBABLE or CONFIRMED CASE.
  - Depending on the result of this assessment, the isolated person will be treated or referred to a physician.
  - Isolated persons found to be SUSPECTED, PROBABLE or CONFIRMED CASE will be asked to go home but should not use public transportation. Such person should instead use a private vehicle or walk home if the destination is within walking distance from campus.





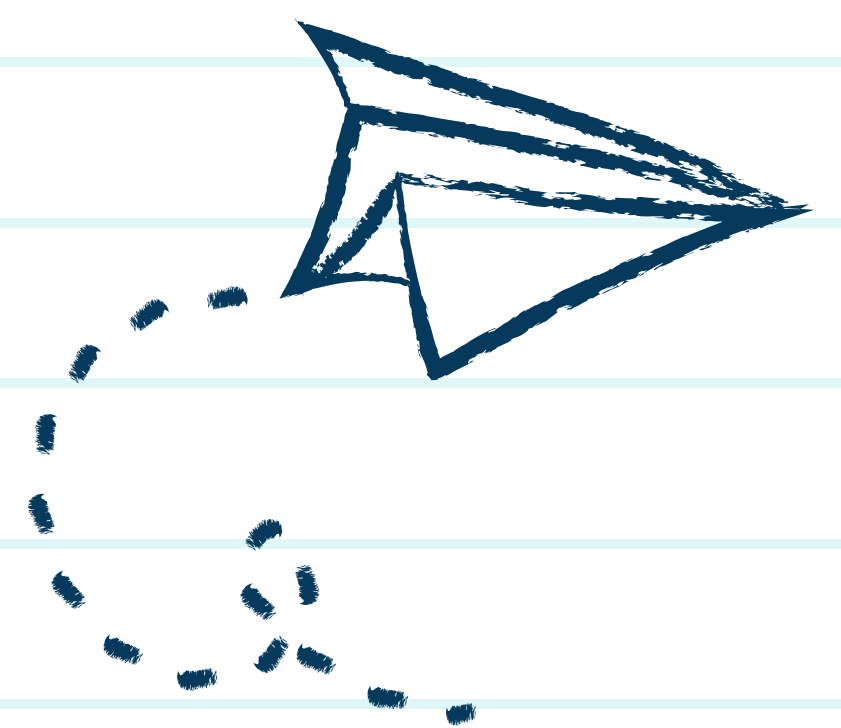
# Covid-Related Symptoms on Campus



- Isolated persons living in a dormitory/boarding house without family members/guardians/trusted friends living nearby should not return to the dormitory/boarding house. The OHS shall arrange for their transportation to a health facility, monitor their health condition, and regularly update their family, if possible.
- The University's Crisis Management Committee shall conduct a risk assessment of the situation and implement the applicable health and safety protocols, including, if necessary and not limited to:
  - a. contact tracing;
  - b. lockdown protocol;
  - c. cleaning and disinfection of facilities; and
  - d. suspension of classes and operations.

## **Contact Tracing Protocol**

- Once the OHS confirms the status of the suspected COVID-19 case, they shall get in touch with all persons who may have been in contact with the suspected COVID-19 case. The OHS shall inform all verified close contacts of a confirmed positive case within 24 hours.
- The OHS will monitor the health status of these verified close contacts for symptoms during the IATF-mandated quarantine period.





# Library Guide

SY 2022-2023



# Services

**SERVICE HOURS:**

**MONDAY TO FRIDAY**

9:00 A.M. - 9:00 P.M.

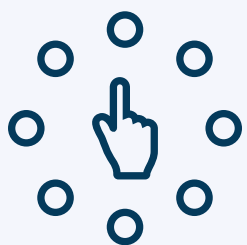
**SATURDAY**

9:00 A.M. - 6:00 P.M.

**\*2ND FLOOR MEZZANINE IS  
RESERVED FOR BARRISTERS FOR THE  
1ST SEMESTER**



**OFF-CAMPUS ACCESS TO  
ELECTRONIC RESOURCES**



**ONLINE REFERENCES &  
RESEARCH SERVICE**



**ONLINE LIBRARY ORIENTATION**



**ONLINE MATERIALS REQUEST**

# Admin Directory

Enrollment, dropping,  
LOA, withdrawal ..... [ldbacani@ateneo.edu](mailto:ldbacani@ateneo.edu)

Academic concerns,  
class lists and grades..... [registrar.law@ateneo.edu](mailto:registrar.law@ateneo.edu)

Dean's office; concerns on  
promissory notes and cuts ..... [law@ateneo.edu](mailto:law@ateneo.edu)

Document requests ..... [records.law@ateneo.edu](mailto:records.law@ateneo.edu)

CDAsia and Examsoft Concerns ..... [law@ateneo.edu](mailto:law@ateneo.edu)

Canvas Concerns ..... [canvas.law@ateneo.edu](mailto:canvas.law@ateneo.edu)

Concerns on payment, &  
to contact the Cashier ..... [jssoriano@ateneo.edu](mailto:jssoriano@ateneo.edu)

Concerns on Scholarships ..... [scholarships.law@ateneo.edu](mailto:scholarships.law@ateneo.edu)

Apprenticeship concerns ..... [mdavid@ateneo.edu](mailto:mdavid@ateneo.edu)

Student Financial Account/Ledger ..... [mli@ateneo.edu](mailto:mli@ateneo.edu)

Concerns on admissions ..... [admissions.law@ateneo.edu](mailto:admissions.law@ateneo.edu)

Restaurant and  
Cafe

Reviews

Power Plant Mall  
Poblacion  
8 Rockwell  
One Rockwell  
Joya Towers





# Power Plant

ROCKWELL DRIVE



## FAST FOOD (BASEMENT)

- MCDONALD'S ..... NEAR TRUE VALUE
- JOLLIBEE ..... NEAR MARKET PLACE
- KFC ..... NEAR MARKET PLACE

## RESTAURANTS

### AMERICAN

- KENNY ROGERS ..... BASEMENT
- 8 CUTS ..... BASEMENT

### ASIAN

- BANANA LEAF ..... BASEMENT
- NONO'S ..... BASEMENT
- PHAT PO ..... BASEMENT
- ROTI SHOP ..... BASEMENT

### CHINESE

- 8 TREASURES ..... BASEMENT
- HEALTHY SHABU SHABU ..... BASEMENT
- MONGKOK ..... BASEMENT
- HU CHI ..... BASEMENT
- DIN TAI FUNG ..... UPPER GROUND FLOOR
- SHI LIN ..... LEVEL 2







# Power Plant

ROCKWELL DRIVE

## RESTAURANTS

### FILIPINO

- CAFE VIA MARE ..... UPPER GROUND FLOOR\*
- MAMOU ..... UPPER GROUND FLOOR\*
- MARY GRACE ..... LEVEL 2
- MESA ..... LEVEL 2
- MANAM ..... LEVEL 3

### FRENCH

- MILKYWAY CAFE ..... BASEMENT
- PAUL BOULANGERIE ..... UPPER GROUND FLOOR

### ITALIAN

- A MANO ..... UPPER GROUND FLOOR\*
- CIBO ..... LEVEL 2

### JAPANESE

- PEPPER LUNCH ..... BASEMENT
- OOMA ..... BASEMENT
- IKKORYU FUKUOKA RAMEN ..... BASEMENT
- YABU ..... BASEMENT
- SUSHI NORI ..... BASEMENT (MARKET PLACE)
- OMOTESANDO ..... UPPER GROUND FLOOR\*
- TEPPAN OKOCHI ..... UPPER GROUND FLOOR\*
- IPPUDO ..... LEVEL 2

*\*with al fresco option*





# Power Plant

ROCKWELL DRIVE



## RESTAURANTS

### KOREAN

- KAYA KOREAN RESTAURANT ..... BASEMENT
- GANSO-SHABUWAY ..... BASEMENT

### OTHER CUISINES

- CHILI'S ..... BASEMENT
- THE CAFE MEDITERRANEAN ..... BASEMENT
- BARCINO ..... UPPER GROUND LEVEL\*
- CDP GLOBAL TABLE ..... UPPER GROUND LEVEL\*
- DRAFT ..... LEVEL 2
- PIZZA EXPRESS ..... LEVEL 2
- THE GRID ..... LEVEL 2 (FOOD COURT)
- CORNER TREE CAFE ..... LEVEL 3
- SALAD STOP ..... LEVEL 3 (CINEMA WING)



## BAKERY

- BREAD TALK ..... BASEMENT
- ERICK KAYSER ..... BASEMENT (MARKET PLACE)
- M BAKERY ..... UPPER GROUND LEVEL
- THE DAILY KNEAD ..... LEVEL 2



\*with al fresco option



# Power Plant

ROCKWELL DRIVE



## CAFE

- STARBUCKS RESERVE ..... UPPER GROUND LEVEL
- BECAUSE COFFEE ..... UPPER GROUND LEVEL
- ILLY CAFE ..... LEVEL 2
- COFFEE BEAN & TEA LEAF ..... LEVEL 3 (CINEMA WING)
- STARBUCKS ..... LEVEL 3 (CINEMA WING)

## SNACKS

### SAVORY

- CASA DAZA (EMPANADAS) ..... BASEMENT
- BLUE KITCHEN ..... BASEMENT
- DELI BY CHELE ..... UPPER GROUND LEVEL
- JAMAICAN PATTY ..... LEVEL 3 (CINEMA WING)

### SWEET

- DUNKIN DONUTS ..... BASEMENT
- MO'S COOKIES ..... BASEMENT
- PINK BERRY ..... BASEMENT
- GONG CHA ..... BASEMENT (MARKET PLACE)
- FRUITS IN ICE CREAM ..... UPPER GROUND LEVEL
- CARMEN'S BEST ..... LEVEL 2
- BAKE CHEESE TART ..... LEVEL 2
- TSUJIRI ..... LEVEL 3





## EARLY BIRD BREAKFAST CLUB

G/F Century City Mall



## KANTO FREESTLYE BREAKFAST

P. Burgos



# Breakfast

## Spots



## COMMUNE CAFE + BAR

36 Polaris



## TILDE BAKERY + KITCHEN

Matilde

# POBLACION



# Lunch Spots

## ELM'S GRILL AND BAR

5072 SGC Building  
corner P. Burgos



## HOLE IN THE WALL

4/F Century  
City Mall



## KHAO KHAI CHICKEN "THAI CHICKEN HOUSE"

782 Felipe St.



## ROYAL INDIAN CURRY HOUSE

General Luna



POBLACION



**TETSUO**

8483 Kalayaan Avenue



**GOGI KOREAN BBQ**

5072 SGC Building corner P. Burgos



**ALMACEN**

5910 Matilde St.



**CRYING TIGER'S STREET KITCHEN**

4896 P. Guanzon

**POBLACION**

*Dinner* Spots



# Drinking Spots

WITH YUMMY BAR CHOW



**EL CHUPACABRA**

5782 Felipe St.

**AGIMAT FORAGING  
BAR AND KITCHEN**

972 Alfonso. corner  
Fermina St.



**OTO**

5883 Enriquez St.



**KAMPAI**

5857 Alfonso. corner  
Fermina St.



**POBLACION**





## 8 ROCKWELL

### *Coffee & Snacks*

Eight Coffee by UCC

### *Restaurants*

Wild Flour  
Marudori (Japanese)  
Bar Pintxos (Spanish)

## ONE ROCKWELL

### *Coffee & Snacks*

Starbucks  
UCC Cafe

### *Restaurants*

Grace Park  
Coco Ichibanya (Japanese Curry)  
Nikkei (Japanese)  
Tajimaya Yakiniku Charcoal Grill  
Fenelley's Kitchen

## JOYA LOFTS AND TOWERS

### *Coffee & Snacks*

Refinery (under renovation)

### *Restaurants*

Made Nice  
Rambla (Spanish)  
Woodfire Bistro



# Parking Options

## NEAR CAMPUS PARKING OPTIONS

### ATENEO LAW SCHOOL\*

- Limited parking

### ONE ROCKWELL TOWER PARKING

(UCC area)

- P50 flat rate

Overnight parking fee of P300 starts at 1am

### POWER PLANT MALL

Weekdays

- P50 for first 4 hours
- P30 for every succeeding hour

Weekends

- P50 flat rate

Basement 1 to 4

Overnight Parking

- (cutoff time 3am-6am) P500 + Parking fee

Lost Card/Ticket

- P300 + parking fee

Illegal Parking P1,500

### JOYA PARKING

(Rambla area)

- P50 Flat Rate

Overnight parking fee of P300 starts at 1am

### POBLACION STREET PARKING\*

NOTE: Parking is not guaranteed nor totally secured

- P50-100 to parking boy who assists



# Parking Options

## NEAR ROCKWELL PARKING OPTIONS



### PASEO CENTER PARKING

- Valero St. corner Sedeno St., Salcedo Village Makati City
- Distance from ALS: 8 mins (2.1 km)
- 24 hours
- Rates: Regular vehicles: P40 for the first two hours, P40 each succeeding hour
- Lost or damaged card: parking fee + P300

### ONE PARKADE

- Bonifacio High Street Taguig City
- Distance from ALS: 15 mins (5.4km)
- 24 hours
- Rates: Mon - Fri: P40 for the first 3 hours, P50 each succeeding hour

### DELA ROSA STEEL PARKING

- Dela Rosa Street Legazpi Village, Manila, Metro Manila
- Distance from ALS: 6 mins (1.3km)
- Rates: P50 for the first 2 hours + P20 each succeeding hour
- Mon - Fri: 6am to 10pm; Sat: 6am to 6pm

### PLAZA 100

- Dela Rosa Street corner V.A Rufino, Plaza 100
- Distance from ALS: 10mins (4km)
- Rates: P45 for the first 2 hours + {20 per succeeding hour
- Mon - Fri: 6am to 10pm; Sat: 8am to 8pm

### 6750 CARPARK

- 6750 Office Tower Carpark Rizal Dr, Ayala Center Makati City
- Distance from ALS: 10 mins (2.4km)
- Closes at 11pm
- Rates: Flat rate of 50 pesos for weekdays and 45 pesos for weekends

### VALERO CAR PARK

- Valero Access Road Makati City
- Distance from ALS: 8 mins (3.3km)
- Rates: P60 for the first two hours, plus P20 each succeeding hour
- Lost or damaged card: Parking fee + P300
- Mon - Fri: 6am to 10pm; Sat: 6am to 6pm

### GABRIELA SILANG CAR PARK

- Gabriela Silang Parking lot Ayala Avenue, Makati City
- Distance from ALS: 9 mins (3.2km)
- Mon - Fri: 7am to 7pm
- Rates: P50 for the first 2 hours + P25 per succeeding hour
- Lost or damaged card: Parking fee + P200

### SALCEDO CAR PARK

- Salcedo Building Car Park, Salcedo, Legazpi Village, Makati City
- Distance from ALS: 12 mins (3.5km)
- Mon - Thurs: 6 am to 10 pm; Fri: 6 am to 5 pm; Close on weekends
- Rates: P50 for the first 2 hours + P20 per succeeding hour
- Lost or damaged card: parking fee + P500



# Student Council Officers



**ACTING PRESIDENT/INTERNAL VICE PRESIDENT**  
MARGA RODRIGUEZ



**EXTERNAL VICE PRESIDENT\***  
JOSE DORADO



**SECRETARY GENERAL\***  
ANTHONY JULIO



**TREASURER\***  
ANGEL PASCUAL



**2023 REPRESENTATIVE**  
BRIAN SALVADOR



**2024 REPRESENTATIVE\***  
HANZO ANGELES



**2025/26 REPRESENTATIVE**  
ELIZ DE LOS SANTOS

# Credits

## CONTENT

Lloyd Bertumen

Nicole De Leon

Yuumei Esma

Cedrick Oliva

Isabelle Princesa

Joice Refrea

Selene Reyes

Beatrice Saulong

Noel Soriano

## CREATIVES

Nicole De Leon

Clarence Lim

Catherine Manuel

Jemma Qui

Janelle Sy